



Global Exchange

2020-2021

Overview

- Why Exchange ?
- Qualification
- Nomination and Application
- Documentation
- Partner Institutions
- KION Online Application System

Why exchange ?

- Gain an international network of friends
- Discover different culture(s)
- Stand out in the job market
- Access a wider range of subject areas
- Acquire an international perspective and experience a different academic system
- Build up motivation, independence, and confidence
- Improve your language skills.

Why Global Exchange?

- Global Exchange Program offers unparalleled opportunities for students to pursue a variety of personal, academic, linguistic, cultural, and professional goals that will serve them for a lifetime.
- Global Exchange Program provides unique opportunities for cultural integration and intercultural learning. Students may engage with the local community, visit culturally important locations, and develop meaningful relationships.
- Living abroad requires changes in attitude, flexibility and the development of complex problem solving skills.

Basics

- You can only study at a partner institution as an exchange student.
- Fall or Spring semester.
- Courses taken abroad **will be transferred** and counted towards OzU graduation requirements.
- **No tuition fee** at the host institution, continue to pay your regular OzU fees.
- All personal expenses (accommodation, travel, insurance, food, visa /residence permit etc.) during exchange are **your responsibility**.

How to choose the institution?

- Availability of courses (in English) that can be transferred towards OzU graduation requirements.
- Some institutions may offer interdisciplinary programs and a limited number of English courses for exchange students
- No overlap in academic semesters
- Services offered: housing, orientation, support services etc.
- Consider the cost of living (housing, residence permit/visa, food, health insurance, travel, etc.)

How to choose the institution?

- Attend OzU IO info sessions, visit partner institutions' exchange student pages, talk to former exchange students, exchange program coordinators and the OzU IO.
- Cultural, social, travelling opportunities
- Suitable semester in order to graduate on time and not to adversely affect the flow of your studies here at OzU.
- OzU Exchange Program Coordinators: [Link](#)

Faculty	Program	Coordinator	E-mail
Faculty of Engineering	Mechanical Engineering	Dr. Güven Yapıcı	guven.yapici@ozyegin.edu.tr
	Electrical & Electronics Engineering	Dr. Cenk Demiroğlu	cenk.demiroglu@ozyegin.edu.tr
	Computer Science	Dr. Kübra Kalkan Çakmakçı	kubra.kalkan@ozyegin.edu.tr
	Industrial Engineering	Dr. İhsan Yanıkoğlu	ihسان.yanikoglu@ozyegin.edu.tr
	Civil Engineering	Dr. Taner Yılmaz	taner.yilmaz@ozyegin.edu.tr
Faculty of Architecture and Design	Architecture	Dr. Demet Mutman	demet.mutman@ozyegin.edu.tr
		Dr. Gül Çanakcıoğlu	gul.canakcioglu@ozyegin.edu.tr
	Industrial Design	Dr. Zeynep Karapars	zeynep.karapars@ozyegin.edu.tr
	Communication Design	Dr. Metin Çavuş	metin.cavus@ozyegin.edu.tr
	Interior Architecture and Environmental Design	Dr. Zeynep Ceylanlı	zeynep.ceylanli@ozyegin.edu.tr
Faculty of Social Sciences	Psychology	Dr. Alper Açık	alper.acik@ozyegin.edu.tr
	International Relations	Dr. Konstantinos Travlos	konstantinos.travlos@ozyegin.edu.tr
Faculty of Law	Law	Dr. Işık Özer	isik.ozel@ozyegin.edu.tr
Faculty of Business	All majors	Dr. Başak Altan	basak.altan@ozyegin.edu.tr
School of Applied Sciences	All majors	Dr. Aslı Zuluğ	asli.zulug@ozyegin.edu.tr

Application Period for 2019-2020 Fall & Spring Semesters

- Online application will be active between **15 November – 28 November 2019, 13:00.**
- Late applications will not be considered.
- Eligible candidates will be invited for interviews after the application deadline.

Global Exchange Application Process

1. Attend an Info Session
2. Online Application ([KION System](#))
3. Evaluation Process (Interviews)
4. Language Score
5. Nomination and Placement
6. Application to Host Institution
7. Documentation
8. Transcript and Credit Transfer

Qualifications

- Qualification to apply:
 - ▶ CGPA \geq 3.00, 30 ECTS+.
- Qualification to be nominated:
 - ▶ Jury Evaluation/Placement,
 - ▶ CGPA \geq 3.00,
 - ▶ Language requirement of the respective institutions.

**Please note that you must complete 60 ECTS credits at OzU before your exchange semester begins. IO will make an eligibility check for each student.

Qualifications

- The jury evaluates students from academic, social, linguistic and cultural perspectives so you should be able to express yourself thoroughly in all these terms.
- TOEFL/IELTS required for most partners; min. score may vary 80 -100 (IBT), 6.5 IELTS or PTE (Students who will be nominated must take it by **January 20th, 2020**)
- Students who do not meet the min. language requirement of the respective partner institution will not be nominated by OzU.

Notes

- Home and host institutions may ask for additional information before and during the evaluation phase.
- You must sign the **personal and financial commitment form** at the time of accepting your placement.
- Please note that there are always risks associated with graduation delays due to the fact that priority courses may not be taken at the host institutions or course lists may change at the very last minute.
- Students may apply for Erasmus+ and Global Exchange Program but the semester in which the student is placed for an exchange program can not be identical. In such a case, students must withdraw from one within the deadline presented by the IO.

Nomination and Application

- OzU IO nominates placed students in line with the partners' deadlines.
- Only after the official nomination, placed students may fill out the exchange application form of the partner institution.
- Please respect the evaluation period of the host institution & wait for the decision patiently.
- Institutions may require application/insurance fees.
- Acceptance is never guaranteed!
- Follow the documentation/correspondence from partners since partner institutions may communicate directly with candidate students after the nominations.

Partner institution application package will most likely include:

- Application Form
- Statement of Purpose
- Language Proficiency Document
- OzU Transcript
- Provisional course selection
- Study Plan
- Passport copy
- Photo
- CV
- Health Reports/Insurance Policy
- Financial Documentation

Study Plan

- Must be approved by the OzU program coordinator before departure.
- The list of available courses at the host institution may change at a later stage. It must be finalized in the beginning of your exchange term.
- Course registration depends on the partner institutions' rules & regulations.
- [Study Plan](#)

After Receiving Acceptance From the Partner

- Finalize your **STUDY PLAN** with your Exchange Program Coordinator
- Take care of your visa, health insurance, travel, accommodation etc. arrangements – **YOUR OWN** responsibility
- Some countries (i.e. USA, Canada) have strict deadlines/rules on visas and immigration.
- Follow course registration information sent by the host institution.

After the Exchange Period

- After the exchange, Faculty/School/ Institute Executive Board transfers the credits/grades earned based on the Transcript of Records from the host institution.
- Credits successfully obtained abroad, are counted towards OzU graduation requirements.
- Special requests to exclude courses, credits or grades from being transferred will not be considered.
- Semesters spent as outgoing special and exchange students at other higher education institutions are counted towards the period of study.
- Students cannot repeat the courses that are successfully passed at the partner institution at OzU.

Partner Institutions

Faculty of Business-1



Partner Institution	Country	Program	UG/GR	Slots	Language Requirement
University of Alberta	Canada	All	UG, GR	2	TOEFL IBT 90, with no less than 21 on each band
Xiamen University	China	All	UG	2	TOEFL IBT 80, IELTS 6.5
The American University in Cairo	Egypt	All	UG	1	TOEFL IBT 83 (22 in writing), IELTS 6.5 (7 in writing)
University of Rome Tor Vergata	Italy	All	UG	1	Italian: B2
Yokohama National University	Japan	All	UG	1	TOEFL IBT 80, IELTS 6.5
Universidad de Monterrey	Mexico	All	UG	2	TOEFL IBT 80, IELTS 6.5
ITMO University	Russia	All	UG/GR	2	English: TOEFL IBT 90, IELTS 6.5 Russian: B2 for Russian courses
University of Texas at Dallas	USA	All	UG	1	TOEFL IBT 80, IELTS 6.5, PTE 67.

Partner Institutions

Faculty of Business-2



Partner Institution	Country	Program	UG/GR	Slots	Language Requirement
<u>Kookmin University</u>	South Korea	All	UG	1	TOEFL IBT 80, IELTS 6.5
<u>Catholic University of Korea</u>	South Korea	All	UG	1	TOEFL IBT 80, IELTS 6.5
<u>Sejong University</u>	South Korea	All	UG/GR	1	TOEFL IBT 80, IELTS 6.5
<u>Woosong University</u>	South Korea	All	UG/GR	1	TOEFL IBT 80, IELTS 6.5
<u>INHA University</u>	South Korea	All	UG	1	TOEFL IBT 80, IELTS 6.5
<u>Dankook University</u>	South Korea	All	UG	2	TOEFL IBT 80, IELTS 6.5
<u>National Central University</u>	Taiwan	All	UG	2	TOEFL IBT 80, IELTS 6.5
<u>National Taiwan University of Science and Technology (TaiwanTech)</u>	Taiwan	All	UG	1	TOEFL IBT 80, IELTS 6.5
<u>National Dong Hwa University</u>	Taiwan	All	UG	1	TOEFL IBT 80, IELTS 6.5



Partner Institutions

Faculty of Engineering

Partner Institution	Country	Program	UG/GR	Slots	Language Requirement
The American University in Cairo	Egypt	CS,ME,EE	UG	1	TOEFL IBT 80, IELTS 6.5
University of Rome Tor Vergata	Italy	All	UG	1	Italian B2
Yokohama National University	Japan	All	UG	1	English, TOEFL 80, IELTS 6.5
Seoul National University of Science and Technology	South Korea	IE	UG/GR	2	TOEFL IBT 80, IELTS 6.5
Catholic University of Korea	South Korea	EE,CS	UG	1	TOEFL IBT 80, IELTS 6.5
Sejong University	South Korea	All	UG/GR	1	TOEFL IBT 80, IELTS 6.5
Kookmin University	South Korea	All	UG	1	TOEFL IBT 80, IELTS 6.5
Dankook University	South Korea	All	UG	2	TOEFL IBT 80, IELTS 6.5
INHA University	South Korea	ME, IE, CE, EE	UG	2	TOEFL IBT 80, IELTS 6.5
ITMO - Saint Petersburg National Research University	Russia	CS	UG/GR	2	English: TOEFL IBT 90, IELTS 6.5 Russian: B2 for Russian courses
National Dong Hwa University	Taiwan	CS	UG	1	TOEFL IBT 80, IELTS 6.5
National University of Taiwan Science and Technology	Taiwan	All	UG	1	TOEFL IBT 80, IELTS 6.5
Oregon State University	USA	All	UG	5	80+ IBT TOEFL (min. 16 pts. each section) 6.5+ IELTS

Partner Institutions

Faculty of Social Sciences



Partner Institution	Country	Program	UG/GR	Slots	Language Requirement
University of Texas at Dallas	USA	IR	UG	1	TOEFL IBT 80, IELTS 6.5, PTE 67.
Sejong University	South Korea	IR	UG/GR	1	TOEFL IBT 80, IELTS 6.5
The Catholic University of Korea	South Korea	IR, PSY	UG	1	TOEFL IBT 80, IELTS 6.5
The American University in Cairo	Egypt	IR	UG	1	TOEFL IBT 80, IELTS 6.5
National Dong Hwa University	Taiwan	PSY	UG	1	TOEFL IBT 80, IELTS 6.5



Partner Institutions

Faculty of Architecture and Design

Partner Institution	Country	Program	UG/GR	Slots	Language Requirement
Kookmin University	South Korea	All	UG	1	TOEFL IBT 80, IELTS 6.5
Tongji University	China	Industrial Design Int & Env Design Communication Design	UG/GR	2	TOEFL IBT 80, IELTS 6.5
The Sustainable Design School	France	Industrial Design Int & Env Design Communication Design	UG/GR	3	TOEFL IBT 80, IELTS 6.5
Sejong University	South Korea	All	UG/GR	1	TOEFL IBT 80, IELTS 6.5
The American University in Cairo	Egypt	Architecture	UG	1	TOEFL IBT 80, IELTS 6.5
Universidad de Monterrey	Mexico	All	UG	2	TOEFL IBT 80, IELTS 6.5
National University of Taiwan Science and Technology	Taiwan	All	UG	1	TOEFL IBT 80, IELTS 6.5
University of Applied Sciences Western Switzerland (HES-SO)*	Switzerland	Architecture	UG	2	French B2

*Swiss Mobility rules apply to the interested students. Financial support might be provided by the Swiss institutions. Please contact IO for details. This institution is not suitable for students who do not have a French/German language certificate.



Partner Institutions

Faculty of Law

Partner Institution	Country	Program	UG/GR	Slots	Language Requirement
Kookmin University	South Korea	Law	UG	1	TOEFL IBT 80, IELTS 6.5
University of Rome Tor Vergata	Italy	Law	UG	1	Italian B2
University of Fribourg*	Switzerland	Law	UG	1	French B1 and above

*Swiss Mobility rules apply to the interested students. Financial support might be provided by the Swiss institutions. Please contact IO for details. This institution is not suitable for students who do not have a French/German language certificate.

School of Applied Sciences

Partner Institution	Country	Program	UG/GR	Slots	Language Requirement
Sejong University	South Korea	All	UG	1	TOEFL IBT 80, IELTS 6.5
Woosong University	South Korea	All	UG/GR	1	TOEFL IBT 80, IELTS 6.5

KION Online Application System

Language English

User Input

User Name
Password

Remember me

Login

Forgot My Password
Agreement List
Register & Apply

Announcements

Global Exchange 2020-2021

[Click here to make a pre application to the Global Exchange program.](#)

The system may not be compatible with mobile devices.

Please use your OzU username and password. If you forgot your username/password click [here](#).

2019 © Copyright by KION Version: 1.19.6998.31949

First time KION users:

Please click the **“Register & Apply”** and complete your registration in the KION system.

If you already logged in to KION before, you don't have register again. You may simply use your username and password.

Exchange Programs Pre-Application Form Cancel

Erasmus+

Global Exchange

Exchange Programs Pre-Application Form Cancel

Staff

Student

Exchange Programs Pre-Application Form Cancel

Incoming Student

Outgoing Student

KION Pre-application

Exchange Programs Pre-Application Form > Outgoing Student

User Name:

Enter Your University Account User Name

Password:*

Exchange Programs Pre-Application Form > Outgoing Student

E-mail:*

User Name:

Password:*

TC/Foreign no:*

First Name:* Last Name:*

Nationality:*

Department:*

Registration Type:*

The Application Period:*

Specify the period you want to participate in mobility

- Select the program:
 - Global Exchange > Student > Outgoing Student
- Insert your OzU username/password.
- After your validation, you will review the following screen with your personal information and will need to complete it by making the necessary selections.
- After you save, you will receive an email.

KION Online Application System

Language English

User Input

User Name:

Password:

Remember me

[Forgot My Password](#) ?

Announcements

2019-2020 Global Exchange Program Pre-Application
[Click here to make a pre application to the exchange program.](#)

GLOBAL EXCHANGE PROGRAM

Please use your OzU username and password. If you forgot your username/password click [here](#).

2018 © Copyright by KION Version: 1.18.6870.25182

- You may now access the “**Application Form**” by inserting your username and password.

KION Online Application System

- You must now click on the “Complete the Application” button to continue.

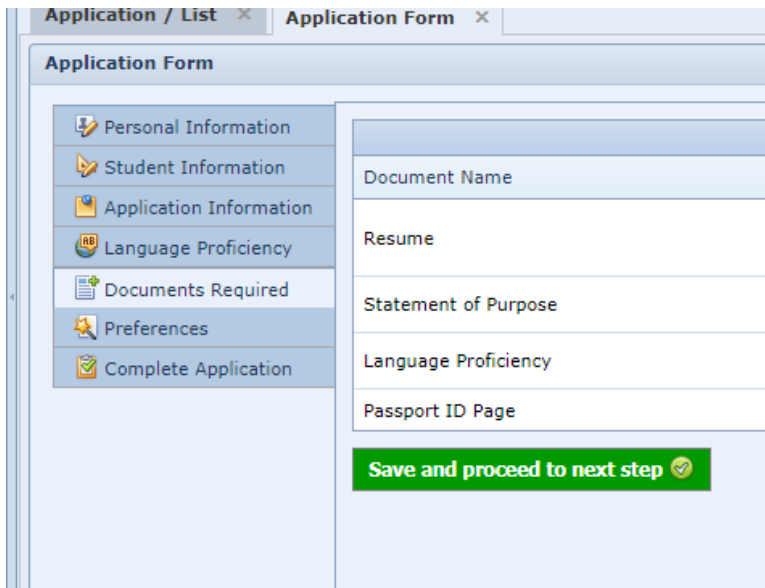
My applications

[+ Make A New Application](#)

My applications

Başvuru Formu	Application Date	Academic Year	Academic Term	Exchange Program	Mobility Type	Başvuru Tipi	Application Status
📄 Complete The Application	9.11.2017 10:59:10	2017-2018	Fall	Global Exchange	Outgoing Student	Study Mobility	Online Registered
📄 Complete The Application	5.2.2017 22:21:51	2017-2018	Spring	Erasmus+	Outgoing Student	Study Mobility	Online Registered

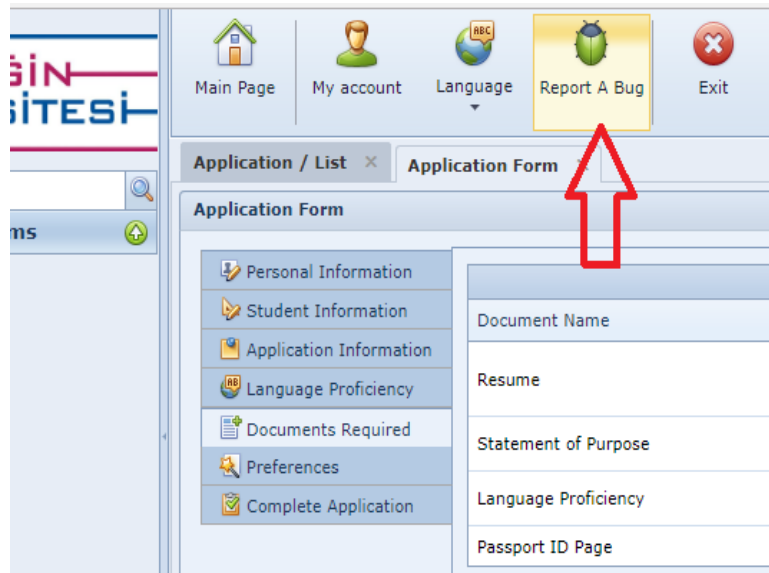
KION Online Application System



The screenshot displays the 'Application Form' interface. On the left, there is a vertical navigation menu with the following items: Personal Information, Student Information, Application Information, Language Proficiency, Documents Required, Preferences, and Complete Application. The main content area on the right contains several input fields: Document Name, Resume, Statement of Purpose, Language Proficiency, and Passport ID Page. At the bottom of this area is a green button labeled 'Save and proceed to next step' with a checkmark icon.

- You must complete all parts of your application.
- When filling out your application, you may save your progress and continue later. In this case, you will see “Online registered” as your application status.
- Once you successfully submit your application you will see “Submitted” as your status.
- Please make sure you submit the form before the deadline. (Note that you can only submit the form once.)

KION Online Application System



- If you encounter any technical difficulties, please click on the Report a Bug button. The respective unit will review the problem and contact you as soon as possible.

Testimonials



<https://www.youtube.com/watch?v=RByrkAa4Ed0>

<https://www.youtube.com/watch?v=S0kX6xxe7aU>



Thank you 😊

CONTACT US:

INTERNATIONAL.RELATIONS@OZU.EDU.TR