



2020-21 Erasmus+ Traineeship Mobility

International Office



December 2019

Overview

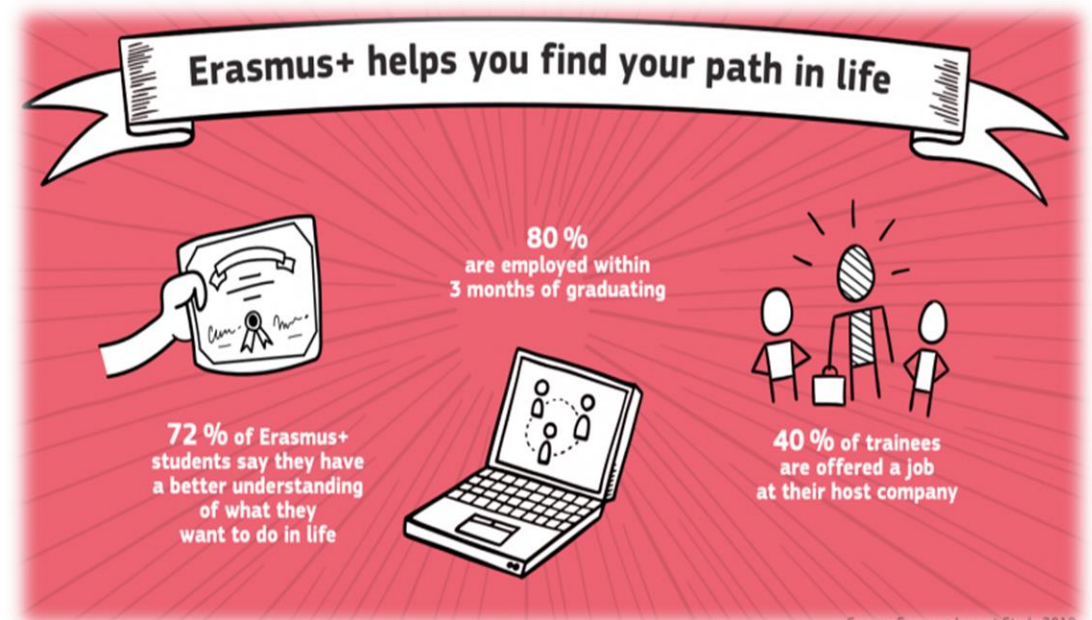
- Pluses of Erasmus Plus
- Erasmus+ Program
- Erasmus+ **Traineeship Mobility** Application
- Erasmus+ Traineeship Mobility Grant
- Students with Special Needs
- Exploring the Destination

Pluses of Erasmus Plus



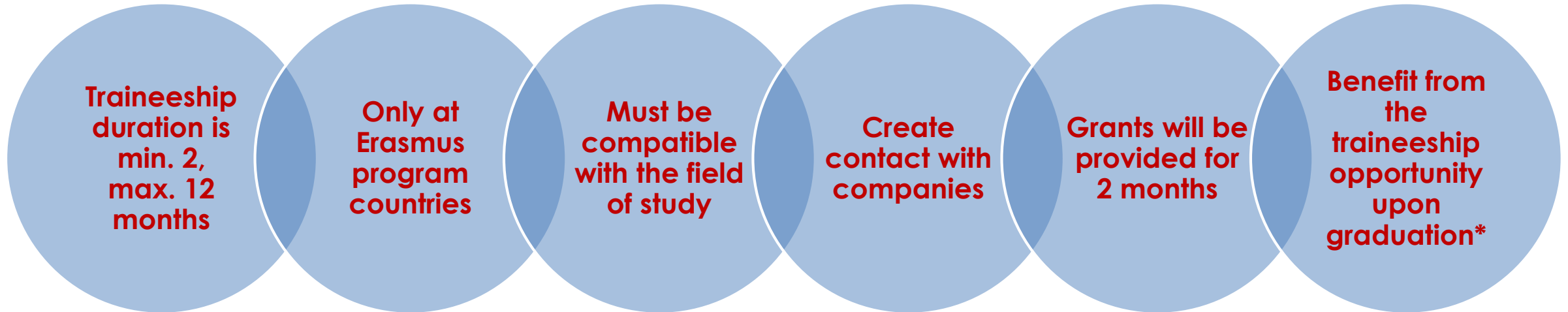
Erasmus+ program provides study abroad opportunities for over 4 million students.

1. Erasmus+ Study Mobility
2. **Erasmus+ Traineeship/Internship**



Source: Erasmus Impact Study 2019

Erasmus Internship/Traineeship



Erasmus traineeship can be approved and counted as a **mandatory internship** by your faculty but your internship must meet both requirements. For mandatory internship you must get approval by your faculty separately.

*Students can be Erasmus intern within 12 months upon graduation with the condition of applying before graduation in their final year.

Application Steps & Requirements

Online Application	intexchange.ozyegin.edu.tr (KION)
Application Period	30 January – 13 February 2020, 13:00
Language Exam	14 February 2020, Friday @13:00
Invitation Letter submitting	till 23 March 2020, Monday with approval by Program Coordinator
Results	mid-April at the earliest

CGPA for undergraduate students:

min. 2.20 / 4.00

CGPA for graduate students:

min. 2.50 / 4.00

Language requirement:

Erasmus Language Exam (ELE) - min. 60/100 score

Erasmus score:

CGPA 50% + ELE Score 50%

Important Points

- **Ranking** will be calculated based on Erasmus Score and will be faculty based.
- The applicants who completed the online application are required to submit a valid Invitation Letter on 23 March 2020 at the latest. **Otherwise their applications will be cancelled automatically.**
- The applicants should contact their [faculty program coordinator](#) to get signed approval on their invitation letter before submitting.
- Invitation letter should include the following information:
 - Start and end date of the traineeship
 - Company and supervisor name & contact information
 - Job description
 - Signature and stamp

Additional Criteria

- **-10 points:** Previous participation or withdrawing from the program after submitting the commitment form
- **-10 points:** Participation to the program in the country of citizenship.
- **-5 points** : Placed students who do not attend the meeting/orientation about mobility without a valid excuse – *in the case of a student applying to the Erasmus program again*
- **-5 points** : Placed students who do not inform OzU IO regarding the non-participation in mobility on time – *in the case of a student applying to the Erasmus program again*
- **+10 points:** Disabled Identity Card holders.
- **+10 points:** Students who submit an official letter based on Act No. 2828 on social services and child protection agency
- **+15 points:** Veterans/Martyrs ID Card holders.

*If you would like to apply for both traineeship and study mobility programs, **10 points will be deducted from your Erasmus Score for traineeship application.***

Exploring the Destination

- **Cost of Living** - housing, travel, food, etc.
- **Work, Visa & Residence Permit Regulations** - Check with the host country for interns.
- **Bank Statement for Visa Application** - Countries like the Netherlands, Belgium, Germany, Norway, Sweden, Austria, Slovenia, Czech Republic, Finland, and Lithuania may ask for personal bank statements with a different conditions.

Visa and residence permit regulations vary from country to country and are subject to change each year.

- **Mandatory Insurance Policies**
- ❖ **United Kingdom:** Visa application procedure is exhaustive and the student must submit CoS & Tier 5 Visa Application. Students must receive a Certificate of Sponsorship number before they apply for their Tier 5 visa which may take up to 8 weeks.

Students are responsible for finding their own host organization/company.

We highly suggest our students to prepare a well-drafted resume and motivation letter to send to companies that they are interested in.

You may start your search by visiting the following links:

- [Erasmus Intern](#)
- [EURES](#)
- [Global Placement](#)
- [EURASMUS](#)

Eligible Host Institution/Enterprise

- **EU institutions, EU funded projects and EU agencies are not acceptable** as host institutions.
- For example, a suitable host organization can be a:
 - ❖ public or private, a small, medium or large enterprise (including social enterprises);
 - ❖ public body at local, regional or national level;
 - ❖ social partner or other representative of working life, including chambers of commerce, craft/professional associations and trade unions;
 - ❖ research institute or foundation;
 - ❖ school/institute/educational center (at any level, from pre-school to upper secondary education, and including vocational education and adult education);
 - ❖ non - profit organization, association, NGO;
 - ❖ body providing career guidance, professional counselling and information services;
 - ❖ Program Country HEI awarded with an ECHE

Erasmus Grants

- Limited amount is allocated to OzU.
- Availability is based on **your ranking within the faculty.**
- Monthly amount is based **on host country.**
- **Max. 2 months** (60 days) of your mobility will be funded to support more students.
- **Erasmus Grant funds you partially**, so you will need additional resources for essential living expenses.
- It's also possible to participate in the Erasmus+ program as **a zero grant student.**
- ❖ You may be eligible for additional financial support from the enterprise or other sources.

Countries	Monthly Grants
UK, Denmark, Finland, Ireland, Sweden, Iceland, Liechtenstein, Luxembourg, Norway, Germany, Austria, Belgium, France, Cyprus, the Netherlands, Spain, Italy, Malta, Portugal, Greece	600 EURO
Bulgaria, Estonia, Latvia, Lithuania, Hungary, Poland, Romania, Slovakia, Czech Republic, Croatia, Slovenia, Macedonia, Serbia, Turkey	400 EURO

Students with Special Needs

- Additional costs must be **directly related to participants' disability**.
- Application to Turkish National Agency
 - It is necessary to explain why do you need for special needs support.
 - Including evidence which provides information on the level of disability.
- Links:
 - <https://mapped.eu/>
 - <https://exchangeability.eu/>
 - <https://studenttoolkit.eu/campus-accessibility/>
 - [Ulusal Ajans – Özel İhtiyaç Desteği](#)

Thank you & Good luck!

Contact

international.relations@ozu.edu.tr

International Office

<https://www.ozyegin.edu.tr/tr/degisim-programlari-ve-isbirlikleri>

